



# L'ARPENTEUR LOUISIANE

AUGUST 2021

VOL. 60 NO. 3

**TIME TO RENEW  
YOUR MEMBERSHIP!**  
*(See Page 3 for Details)*





# L'ARPELLEUR LOUISIANE

AUGUST 2021

VOL. 60 NO. 3

9643 Brookline, Ste. 108  
Baton Rouge, LA 70809-1488  
Office: 225/925-5800  
Fax: 225/925-5802  
[lsps@lsps.net](mailto:lsps@lsps.net) • [www.lsps.net](http://www.lsps.net)

## INSIDE THIS ISSUE:

<b>Message from the President.....</b>	<b>3</b>
Don "Ricky" Wood, II	
<b>Donation Requests .....</b>	<b>4</b>
<b>LA Tech.....</b>	<b>5</b>
<b>District Information .....</b>	<b>6</b>
<b>From Around the State .....</b>	<b>7</b>
<b>Nicholls Geomatics Program Update .....</b>	<b>8</b>
<b>Legislative Update.....</b>	<b>9</b>
<b>NSRS.....</b>	<b>10</b>
<b>Obituary.....</b>	<b>11</b>
<b>Benefits of Joining .....</b>	<b>12</b>
<b>Membership Application .....</b>	<b>13</b>
<b>Sustaining Members.....</b>	<b>15</b>

*Special Thanks to our Contributing Writers.*

Articles submitted will be considered for publication and should be emailed to: [lsps@lsps.net](mailto:lsps@lsps.net). Please contact the office with any questions.

*The officers and board of LSPS and editors of this publication do not necessarily endorse opinions expressed by individual writers included herein.*



The *L'Arpeleur Louisiane* is published quarterly as a service to the members of the Louisiana Society of Professional Surveyors. As stated in the LSPS Articles of Incorporation, the LSPS is "organized for the following purposes and to carry out the same:

Enhancing the status of the Land Surveying Profession by:

- 1) Maintaining high technical and cultural standards for entrance to the Society.
- 2) Cooperating with educational institutions in the maintenance of high standards of education in Land Surveying.
- 3) Requiring a high standard of ethical practice by members of the Society.
- 4) Aiding in the adoption of high standard of attainment for the granting of the legal right to practice Professional Land Surveying.
- 5) Fostering among students of Land Surveying the study of philosophy and history, tradition and achievement, duties and social functions of the Land Surveying Profession.
- 6) Encouraging the personal and professional development of young Land Surveyors.
- 7) Supporting activities looking to the increased employment of Land Surveyors and seeking new opportunities for service in Land Surveying."

## LSPS ADVERTISING RATES:

SIZE	COST PER ISSUE	PER YEAR
FULL PAGE INSIDE	\$700.00	\$2200.00
FULL PAGE BACK COVER	\$800.00	\$2800.00
½ PAGE	\$400.00	\$1400.00
¼ PAGE	\$200.00	\$600.00

All ads are prepaid. Ad and payment should be sent to LSPS by the 15th of the month prior to publishing. Issues are published in August, November, February and May. Please mail to address listed above.

*Prices apply to camera-ready copy.  
A charge will be added for creation of an ad or art work.*



## ***PRESIDENTIAL PRIVILEGE***



**Don "Ricky" Wood, II**  
*LSPS President*

Dear Membership:

This time a year ago, we were all in the middle of the COVID 19 Pandemic with our livelihood slowing or had already slowed to a crawl. Since then our state had opened back up with some limitations but generally, everything was making some positive progress. Now we are in the middle of COVID Delta Variant, which sounds like some futuristic Datum Anomaly or a form of space travel option. There are various health care options available now that weren't available in 2020. I hope everyone will make their own educated decision to take part in the best health care options available to them. LSPS members are such a force to reckon with so remember to turn to each other as new situations and circumstances may arise. Together, we can help each other get through these Delta Variant times.

We are continuing to advance in the midst of the Pandemic. Drone technology has advanced to such a point that we now have new legislation to assist with the use and practices of the unmanned aerial vehicle or the "drone" as a surveying instrument. Louisiana's Legislature passed what is now ACT 328 that established the Louisiana Drone Advisory Committee, administered by the LADOTD Office of Multimodal Commerce. LSPS is just one of the many State Organizations tasked with appointing a committee member for each fiscal year. It is my pleasure to announce Mr. Stan Ard, Survey Manager, LADOTD, as LSPS's first appointment to this new committee. They will have several meetings during the fiscal year with the first one on August 24, 2021, in Baton Rouge. Stan will be a loud and strong voice, on this committee, for the Professional Land Surveyors in Louisiana. I hope to bring you more information on the initial work of this committee in later newsletters. Please contact the LSPS office at [lsps@lsps.net](mailto:lsps@lsps.net) or me at [ricky@polarisservices.net](mailto:ricky@polarisservices.net) for additional information regarding this committee.

The Lake Charles area will be the location for our 2022 LSPS Convention. The planning is well underway to provide us all with another great convention with new information and the latest technologies. Please contact your district chairman or me with new and/or different thoughts for this 2022 convention.

Serving as the LSPS President continues to be a special experience in my life. I hope these newer (pardon my grammar) times will have all of us reaching out to each other as family and friends. Again, feel free to contact me directly at [ricky@polarisservices.net](mailto:ricky@polarisservices.net)

Continued thanks for this honor and privilege to serve. Be careful and work safely.

Sincerely,

Don "Ricky" Wood, II

**\*\*MEMBERSHIP DUES RENEWALS\*\***

**HAPPENING NOW! 2021-2022 FISCAL YEAR AVAILABLE ONLINE!**

Membership Login ID: YOUR EMAIL ADDRESS

Password: If you've forgotton, click on "Forgot your Password"

# SAVE THE DATE!!!

**WHAT: LSPS 61st Annual Convention**

**WHEN: April 6-8, 2022**

**Check our website for updates!**

**WHERE: Golden Nugget Lake Charles  
2550 Golden Nugget Blvd.  
Lake Charles, LA 70601**

**Check the LSPS website [www.lsp.net](http://www.lsp.net) for updates.**

*Hope to see you there!*

## DONATION REQUESTS



### WE NEED YOUR HELP!

*Your generous contribution is needed to support the following funds:*

1. **The Education Foundation**, granting of scholarships while providing guidance by assisting worthy students to obtain instruction and training in land surveying and higher education.
2. **The Every Member Campaign (EMC)**, which began in 2006, and was created solely for the purpose of supporting the Geomatics Program at Nicholls State University.
3. **The Disaster Fund**, which stands ready to give relief when disaster hits our area.
4. **The Legislative Fund** allowing us to be ready to address legislation affecting our Surveying Profession.

**FIND THE LINK FOR *DONATION OPPORTUNITIES*  
UNDER “QUICK LINKS” ON OUR HOME PAGE AT  
[WWW.LSPS.NET](http://WWW.LSPS.NET)**

**THANK YOU TO OUR MEMBERS  
DONATING TO THE  
2021-2022 “EVERY MEMBER CAMPAIGN”!**

#### BENEFACTOR LEVEL

Dufrene Surveying & Engineering, Inc.  
Joseph C. Picciola II





# CONSTRUCTION ENGINEERING TECHNOLOGY – SURVEY OPTION NOW AVAILABLE AT LA TECH

The LA Tech Survey Advisory Board met on June 18 and discussed promoting the newly created Construction Engineering Technology – Survey Option to existing and incoming LA Tech students. The Survey Option was developed by Reginald Jeter, PE, Program Chair, Construction Engineering Technology, and allows students the opportunity to graduate in four years with a CET Bachelor of Science degree including 30 hours of Board approved courses in surveying, mapping, and real property.

The Advisory Board plans to foster interest in surveying to CET, civil engineering, and geographic information science students. The group will also partner with student organizations as well as investigate ways in which the surveying community can support the program.

LA Tech currently offers 30 hours of LAPELS approved courses.



## **Advisory Board Members**

Walt Ballard, PLS,

Jon Braswell, PLS, LSPS District 5 Chairman

Charlie Coye, PLS,

Wayland Morgan, PLS

Irene Casas, PhD, School of History and Social Science

Jason Westerman, PLS, LSPS District 6 Chairman

Reginald Jeter, PE, Program Chair, Construction Engineering Technology

## ***Not Shown***

*Andrew Craig, PE, PLS*

*Aaron Wood, PLS, LSPS District 8 Chairman*

*Ryan Estess, PE, PLS,*

*Leland Weiss, PhD - Academic Director: Civil and Mechanical Engineering & Construction Engineering Technology*



# LSPS DISTRICT INFORMATION

DISTRICT	CONTACT INFO
District 1	John Teegarden jteegarden@ascellc.com
District 2	Andrew Szush andrew.szush@tbsmith.com
District 3	Shawn MacMenamin smacmenamin22@gmail.com
District 4	Jason Westerman redchuteland@gmail.com
District 5	Jon Braswell jbraswell@sehuey.com
District 6	Jean Reulet jean.reulet@tbsmith.com
District 8	W. Aaron Wood aaron.wood@woodsurveying.com
District 9	Dennis Gowin dgowin@ddgpc.com

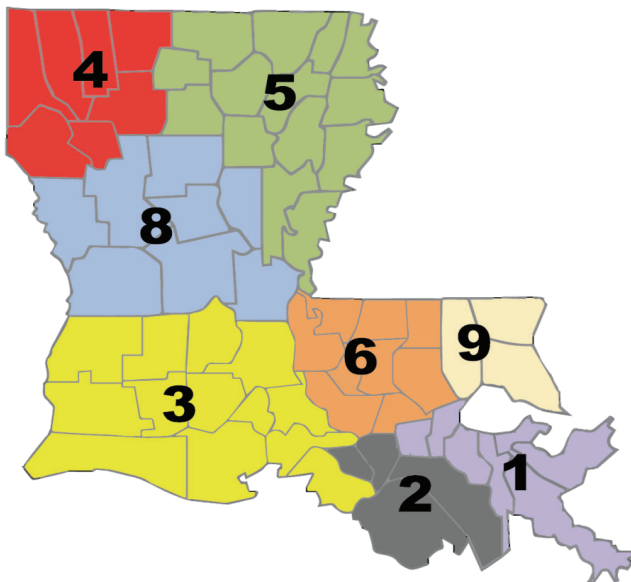
## WHY ATTEND A DISTRICT MEETING?

**Networking** – Who knows more about opportunities in surveying, than those active in it?

**Educational Benefits** - Want to stay of top of our profession? Most meetings offer opportunity for upgrading your experience through top speakers in our field.

**Leadership Opportunities** – It is not enough to just join a district. Take advantage of opportunities to get involved in committee work, serve some time as an officer, and help coordinate events. The more active you are, the more visible you become to other members. Leadership roles reflect well on you, and on the company that employs you. It proves they hired a winner!

If you are not an LSPS member, we would like to invite you to attend a District meeting in your area. Contact the LSPS office at [lsps@lsps.net](mailto:lsps@lsps.net) , or the chairman in your area for details about upcoming meetings.



## LSPS Districts

We would like to invite you to attend a District meeting in your area. Contact the LSPS office at [lsps@lsps.net](mailto:lsps@lsps.net) or the chairman in your area for details about upcoming meetings.





## FROM AROUND THE STATE.....

### **DISTRICT 1 – John Teegarden PLS, Chairman**

Contact John at [jteegarden@ascellc.com](mailto:jteegarden@ascellc.com) for District information.

### **DISTRICT 2 – Andrew Szush PLS, Chairman**

District 2 will attempt to plan a meeting for the end of August.

Contact Andrew at [andrew.Szush@tbsmith.com](mailto:andrew.Szush@tbsmith.com) for District information.

### **DISTRICT 3 – Shawn MacMenamin PLS, Chairman**

A meeting was recently held at NEI in July where new technology was presented to the group. A meeting in Lake Charles is being planned. Also, a new District 3 chair is needed. Please let Shawn know if you're interested!

Contact Shawn at [smacmenamin22@gmail.com](mailto:smacmenamin22@gmail.com) for District information.

### **DISTRICT 4 – Jason Westermann, Chairman**

Jason is waiting to hold a meeting until some local municipalities complete their plat standards. He would like to have these for the meeting. Jason and Jon Braswell (District 5) attended a committee meeting at La Tech with Walt Ballard. They have the 30 hours in place for students to get their surveying hours as electives. There are still details to be worked out.

Contact Jason at [redchuteland@gmail.com](mailto:redchuteland@gmail.com) for District information.

### **DISTRICT 5 - Jon Braswell, Chairman**

A planned August meeting has been postponed because of the new mandates that are coming out. They will hopefully plan a meeting in a month or two. Jon concurred with what Jason (District 4) reported about the La Tech committee meeting.

Contact Jon at [jbraswell@sehuey.com](mailto:jbraswell@sehuey.com) for District information.

### **DISTRICT 6 – Jean Reulet, Chairman**

District 6 recently held a meeting at NTB's office, along with a crawfish boil. They were considering a meeting in August but may have to wait another month or two now.

Contact Jean at [jean.reulet@sjbgroup.com](mailto:jean.reulet@sjbgroup.com) for District information.

### **District 8 – W. Aaron Wood, PLS, Chairman**

Contact Aaron at [aaron.wood@woodsurveying.com](mailto:aaron.wood@woodsurveying.com) for District information.

### **District 9 – Dennis Gowin, PLS, Chairman**

Dennis has started a chat group with known members of District 9 but would like to include any surveyors living in the area!

Contact Dennis at [dgowin@ddgpc.com](mailto:dgowin@ddgpc.com) for District information.



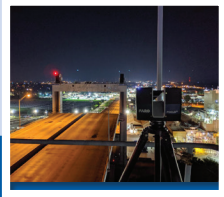
# NICHOLLS GEOMATICS PROGRAM UPDATE

Dr. Esra Tekdal-Yilmaz

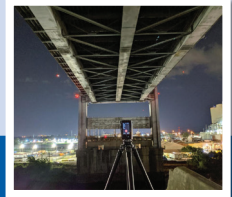
Nicholls State Geomatics program won \$15,000 NCEES Surveying Education Award.

Here is the link:

<https://ncees.org/category/news/awards/surveying-award/>



**WE'D LOVE TO FEATURE YOUR SURVEYING PICTURES IN OUR MAGAZINE!**



**EMAIL PICTURES TO [LSPS@LSPS.NET](mailto:LSPS@LSPS.NET)  
MAYBE YOU'LL SEE YOUR PICTURES IN OUR NEXT EDITION!**

## ENHANCE YOUR CAREER OPPORTUNITIES

**BECOME A CERTIFIED SURVEY TECHNICIAN (CST)**

This four-level certification program indicates official recognition by NSPS that a person can perform surveying tasks at a specific technical level. Certification provides employers with a method of determining job assignments and advancement since certification is an indication of one's ability to perform specific job tasks. Increase Your Skills. Enhance Your Career Opportunities. Set a Straight Course to Your Future. Become a Certified Survey Technician (CST)!



**NSPS**  
**CST**  
CERTIFIED SURVEY TECHNICIAN

learn more at [nsp.us.com](http://nsp.us.com)

+1 (240) 439-4615 Ext. 112

Training now available @ [www.learnpst.com](http://www.learnpst.com)



## Reducing Utility Risk

At T2, we help lower construction costs, minimize risk, and avoid costly utility damage.

We have decades of experience, top notch equipment, and processes to identify, mitigate, manage risks, keeping your projects moving forward.

- Subsurface Utility Engineering
- Utility Coordination
- Surveying Services
- Terrestrial & Mobile LiDAR
- Construction Management

For more information:

Suzanne McCain | 225 900 8683

[info@T2ue.com](mailto:info@T2ue.com)

[www.T2ue.com](http://www.T2ue.com)



*Thank You!*

**FOR RENEWING YOUR LSPS MEMBERSHIP!!**





# LEGISLATIVE UPDATE

By: Harper Duncan & Associates, LLC

The Louisiana Legislature just finished their historical 2021 Veto Session. Historic in the sense that it was the first ever veto session, not historic in changing any of Governor Edwards vetoed bills. The session was to last 5 days but adjourned after only 24 hours. Legislators that called the first ever veto session to order quickly realized they would not have the votes needed to override the Governor. The next Legislative Session is scheduled for March 14, 2022.

As of August 1st, most of the bills we were monitoring during the 2021 Regular Session have now taken effect. In particular the Louisiana Drone Advisory will have its first meeting on August 24th. LSPS was given one appointed spot on this committee to help influence new drone laws and advise the Legislature and Governor on drone issues.

While this is a slow time for the Legislature, committees still continue to meet monthly. We are monitoring those meetings, executive orders and regulatory changes issued by state departments. With a new surge in COVID-19, executive orders and emergency orders are expected increase. As always, we will keep LSPS informed of any changes we hear about or may be coming up in future sessions or executive orders.

Please feel free to reach out to me with any questions or concerns regarding legislative or regulatory issues. I can be reached at [harperduncanllc@gmail.com](mailto:harperduncanllc@gmail.com) or (225) 287-4020.

House of Representatives Commerce Committee	House Committee on Transportation, Highways & Public Works
Representative Paula Davis, Chairman Representative Stephanie Hilferty, Vice Chair Representative Kenny Cox Representative Royce Duplessis Representative Bryan Fontenot Representative Brett Geymann Representative Jonathan Goudeau I Representative Kyle M. Green Jr. Representative Paul Hollis Representative Edmond Jordan Representative Danny McCormick Representative Markham Scott McKnight Representative Candace N. Newell Representative Vincent "Vinney" St. Blanc III Representative Phillip Eric Tarver Representative Polly Thomas Representative Debbie Villio Representative Ryan Bourriaque	Representative Vincent J. Pierre, Chairman Representative Ken Brass, Vice-Chairman Representative Mack Cormier Representative Kathy Edmonston Representative Michael "Gabe" Firment Representative Barbara Reich Freiberg Representative Foy Bryan Gadberry Representative Cedric Glover Representative Dodie Horton Representative C. Travis Johnson Representative Pat Moore Representative Robert "Bob" Owen Representative Charles Owen Representative Rodney Schamerhorn Representative Larry Selders
Senate Committee on Commerce, Consumer Protection & International Affairs	Senate Committee on Transportation, Highways & Public Works
Senator Ronnie Johns, Chairman Senator Cameron Henry, Vice-Chairman Senator Mark Abraham Senator Troy Carter Senator Patrick Connick Senator Cleo Fields Senator Jay Morris Senator Karen Carter Peterson Senator Mack "Bodi" White	Senator Rick Ward, III, Chairman Senator Patrick McMath, Vice-Chairman Senator "Louie" Bernard Senator Barrow Peacock Senator Rogers Pope Senator Edward J. Price Senator Gary Smith



# NSRS Modernization News

Issue 25 July 2021

For all issues of **NSRS Modernization News**, visit:  
[geodesy.noaa.gov/datums/newdatums/TrackOurProgress.shtml](http://geodesy.noaa.gov/datums/newdatums/TrackOurProgress.shtml)

## Updates to Blueprint Documents

[Blueprint for the Modernized NSRS, Part 1: Geometric Coordinates and Terrestrial Reference Frames](#) was updated and released this last quarter.

## Geospatial Summit

NGS hosted the completely virtual 2021 Geospatial Summit on May 4–5, 2021. All recordings and presentation slides are now [available here](#).

## Progress in Ongoing Projects

There are currently **27 ongoing projects** directly related to NSRS modernization around NGS. Here are highlights from some:

### NOAA Foundation CORS Network, NFCN (Project Manager: Will Freeman)

Collaborating with NGA, NGS has identified locations to install NFCN stations at the VLBA facilities near Fort Davis, Texas, and Pie Town, New Mexico. The plans also include placing radar corner reflectors to calibrate Synthetic Aperture Radar (SAR) satellites, improving the monitoring of the surface movement at and between CORSs.

### New Least-Squares Adjustment Code Library (Project Manager: Dr. Dru Smith)

NGS has contracted with Polaris Geospatial Services to produce a comprehensive statistical analysis and least-squares adjustments (LSA) code library. This new library will replace most, if not all, LSA code at NGS including ADJUST, ASTA and CALIBRATE. This new code (working name “LASER” for Least-squares

Adjustments: Statistics, Estimates and Residuals) is written in C++ and relies upon the high-efficiency Eigen linear algebra libraries. In recent tests, LASER replicated the national readjustment of 2011 (which created NAD 83(2011) epoch 2010.00 – 1.2M observations, 240k unknowns) on a 6 core laptop, without Helmert Blocking in under 2 hours. Future tests will include large leveling and gravimetric networks. LASER will be the LSA engine behind OPUS 6.0 and all REC and SEC adjustments.

### M-PAGES (Project Manager: Dr. Andria Bilich)

NGS is developing a multi-GNSS replacement for PAGES, called M-PAGES. This software is now capable of GPS and Galileo solutions. Additional capabilities are under active development, and solutions are being compared to the legacy PAGES software currently in production OPUS.

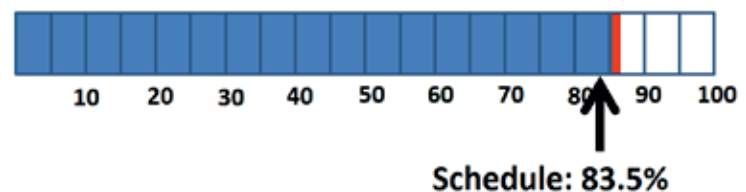
### GRAV-D (Project Manager: Jeffery Johnson)

GRAV-D collected data May 7–June 15 over the Alaskan Aleutian Islands with a NOAA WP-3D Orion aircraft normally used for atmospheric or hurricane research. The block over the Aleutians is 52% complete and we will look for an opportunity to return in the next two years to complete the remaining data collection.

GRAV-D progress last quarter: **up 1.5% to 86.8%**

**AHEAD OF** (new) Schedule!

Recently: Montana, Alaska







# In Memoriam...



## *Brandon "Shane" Joseph Breaux*

(July 26, 1975 - July 23, 2021)

Funeral services were held Tuesday, July 27, 2021 at 3:00 p.m. in Evangeline Memorial Gardens Chapel in Carencro for Brandon "Shane" Joseph Breaux, age 45, who passed away Friday, July 23, 2021. Interment was in Evangeline Memorial Gardens in Carencro.

Mr. Breaux was a native and lifelong resident of Carencro. He was a 1993 graduate of Teurlings Catholic High School and later, graduated with his Bachelor's Degree in Civil Engineering from USL, currently the University of Louisiana at Lafayette. Shane was a family man, devoted husband, a great father, and an incredibly hard worker. His pride and joy were his boys and watching them excel in sports and he enjoyed camping and cooking.

Survivors include his wife, Tammy Cormier Breaux; his two sons, Austen Thomas Breaux and Jace Michael Breaux; his father, Michael Joseph Breaux; and his brother, Kody Michael Breaux all of Carencro. He was preceded in death by his mother, Rebecca Marie Breaux.

A rosary was prayed at 1:30 PM Tuesday lead by Connie Melancon and Sandra Martin. The family requested that visiting hours be observed from 9:00 AM Tuesday until service time on Tuesday.

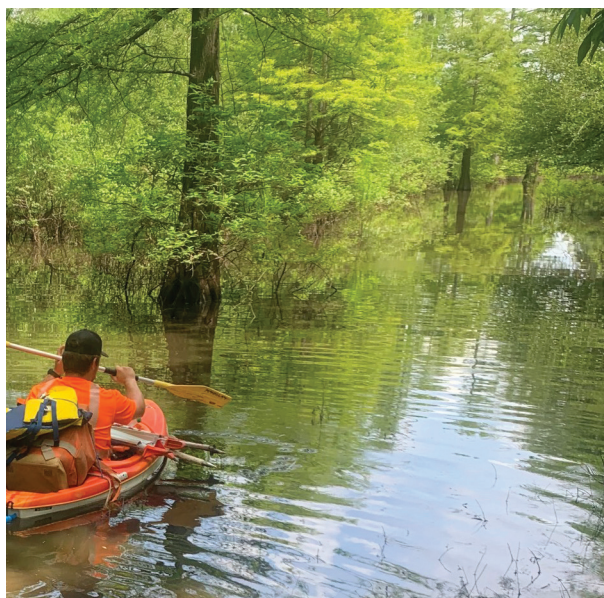
Pallbearers were Austen Breaux, Kody Breaux, J.W. Guidry, Greg Soileau, Keith Vincent, and Kevin Lifsey. Honorary pallbearers were Jace Breaux, Joshua Leblanc, Ricky Moore, Shawn Daigle, Mark Leblanc, Mickey Doyle, and his Godchildren.

Melancon Funeral Home, Evangeline Memorial Gardens Chapel, 4117 N. University Ave., Carencro, (337) 896-3232, was in charge of arrangements.

*These pictures were taken by Justin Miller, Surveying Intern.*

*Photo at right was taken in a tupelo/cypress bottom known as "Alligator Brake" near Columbia, La. If you look hard, you can see the old **witness tree**!*

*Photo below was taken in Boggy Bayou near the Upper Ouachita National Wildlife Refuge, Southeast of Haile, La.*





# BENEFITS OF JOINING LSPS

The Louisiana Society of Professional Surveyors is organized to enhance the Surveying Profession. Our goal is to carry out our mission by maintaining high technical and cultural standards in our field, working with educational institutions for the maintenance of high standards of education in Land Surveying, requiring a high standard of ethical practice by our members, and encouraging the personal and professional development of young Land Surveyors.

## BENEFITS OF MEMBERSHIP IN OUR SOCIETY INCLUDE:

- **NETWORKING** – Who knows more about opportunities within a field than those actually involved in it? No one. The roster of our society is a gold mine to get your network rolling.
- **EDUCATIONAL BENEFITS** – Want to stay on top of your profession, learn new techniques and strategies? There are endless opportunities for upgrading your experience through seminars, listening to top speakers in your field, workshops, and just plain old-fashioned sharing of information among your peers.
- **LEADERSHIP OPPORTUNITIES** – It isn't enough to just join a District of the society. Take advantage of the many opportunities to get involved in committee work, serve some time as an officer, or help coordinate events. The more active you are, the more visible you become to the other members. This can only be a plus in your career future.
- **RESUME UPGRADING** – As our profession becomes more complex and difficult to master, the need for continued certification becomes more prevalent.
- **SOCIAL BENEFITS** – Don't overlook the fun factor. Groups of people with common interests are always sources of new friends. You speak the same language, laugh at the same jokes and dream similar dreams. Becoming active opens up many possibilities!

The new age of advanced technology has created the need for land surveyors to guard their profession. Our society works with the Louisiana Professional Engineering & Land Surveying Board (LAPELS) in the process of establishing the current continuing professional development requirements.

### We have been involved with many surveying issues...

- ◆ our society began in 1961 and currently has over **525 members**
- ◆ we are approved by the LAPELS Board as a **seminar sponsor**
- ◆ LSPS is an affiliate of the American Congress on Surveying and Mapping, and the **National Society of Professional Surveyors**
- ◆ we have a standing Legislative Committee to **review legislation** that may affect the surveying profession
- ◆ the LSPS Liaison Committee communicates with the **LAPELS Board** on issues that affect land surveyors
- ◆ we host an Annual Convention - with exhibitors displaying the latest in surveying equipment, and LSPS offering Personal Development Hours to meet licensing requirements
- ◆ the LSPS Executive Board continually working to upgrade member benefits.





# Louisiana Society of Professional Surveyors

Affiliate of the National Society of Professional Surveyors

9643 Brookline Avenue, Suite 108, Baton Rouge, LA 70809 • Phone (225)925-5800 • Fax (225)925-5802

[lsps@lsps.net](mailto:lsps@lsps.net) • [www.lsps.net](http://www.lsps.net)

PLEASE COMPLETE THE FOLLOWING SPACES:

Registration Number: \_\_\_\_\_

Name: \_\_\_\_\_  
LAST FIRST MIDDLE

P.L.S.  P.E.  Other \_\_\_\_\_

Home Address: \_\_\_\_\_  
STREET CITY & STATE ZIP CODE

Home Phone: \_\_\_\_\_

Business Affiliation: \_\_\_\_\_ Position or Title: \_\_\_\_\_

Business Address: \_\_\_\_\_  
STREET CITY & STATE ZIP CODE

Business Phone: \_\_\_\_\_

Fax Phone: \_\_\_\_\_

E-MAIL: \_\_\_\_\_ UPON MEMBERSHIP ACCEPTANCE, NAME, EMAIL, WORK AND/OR HOME PHONE  
NUMBER CAN BE ADDED TO THE WEBSITE DISTRICT CONTACT PAGE. YES(CIRCLE CHOICE) \_\_\_\_\_ No

Education: \_\_\_\_\_  
SCHOOL DATE GRADUATED DEGREE

Surveying Experience \_\_\_\_\_  
# YEARS

**LSPS Member SPONSOR:**

Name: \_\_\_\_\_ Address: \_\_\_\_\_

Telephone: \_\_\_\_\_ Signature \_\_\_\_\_

I hereby apply for admission into the Louisiana Society of Professional Surveyors as a \_\_\_\_\_ Member, and agree to comply with the Charter, By-Laws and the Code of Ethics of the Association. Please assign me to the following district:

- District 1 – New Orleans
- District 2 – Houma
- District 3 – Lafayette
- District 4 – Shreveport
- District 5 – Monroe
- District 6 – Baton Rouge
- District 7 – Lake Charles
- District 8 – Alexandria
- District 9 – Covington
- Out of State

Date: \_\_\_\_\_

APPLICANT'S SIGNATURE \_\_\_\_\_

## CLASSES OF MEMBERSHIP

### RESIDENT REGISTERED MEMBER

Any person whose legal residence is the State of Louisiana and holding a license from the State of Louisiana authorizing such person to engage in the practice of Land Surveying. Resident Registered Members shall be entitled to vote on all matters and hold any Office in the Corporation.

**INITIATION FEE \$10.00 ANNUAL DUES \$180.00**  
*INCLUDES NSPS MEMBERSHIP*

### NON-RESIDENT REGISTERED MEMBER

Surveyors registered in the State of Louisiana but not a resident of Louisiana. Non-Resident Members shall be entitled to vote but shall not be eligible to hold any Office in the Corporation.

**INITIATION FEE \$10.00 ANNUAL DUES \$140.00**

### STUDENT MEMBER

Any full-time undergraduate student of a college or vocational school recognized by the Board. Student Members shall not be eligible to vote or hold any Office in the Corporation.

**ANNUAL DUES \$20.00**

### ASSOCIATE MEMBER

Any person working toward licensure, land survey intern, or surveyor not registered in Louisiana, recognized and so admitted by the Board of Directors. Associate members shall not be eligible to vote or hold any Office in the Corporation.

**INITIATION FEE \$10.00 ANNUAL DUES \$55.00**

### AFFILIATE MEMBER

Any person not included within the definitions above provided in paragraphs 1, 2, 3 and 4 interested in advancing the cause and aims of the Corporation. Affiliate Members shall not be eligible to vote or hold any Office in the Corporation.

**INITIATION FEE \$10.00 ANNUAL DUES \$35.00**

### SUSTAINING MEMBER

Any firm or individual desiring to support the aims and objectives of the Association, who may or may not be entitled to one of the foregoing classes of Membership, may become a Sustaining Member upon application and approval by a majority vote of the Board of Directors. Sustaining Members shall not be eligible to vote or hold any Office in the Corporation, however, if a Sustaining Member also holds another class or other classes of membership that Sustaining Member class shall not infringe upon such rights and privileges.

**ANNUAL DUES \$300.00**

Credit card# \_\_\_\_\_

Expiration Date: \_\_\_\_\_

***Please return completed form with Initiation Fee and Annual Dues to LSPS at the address above.***

Rev.04/20

# WANT TO GET INVOLVED? YOU CAN HELP

BY VOLUNTEERING TO WORK WITH ONE OF THE FOLLOWING:

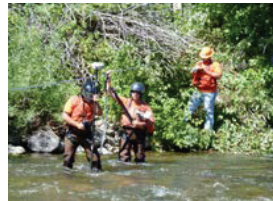
- Legislative Committee
- Education Committee
- Newsletter Committee
- Seminar & Technical Education Committee
- Scholarship Committee
- Promotion of the Profession Committee
- and others.

If you would like more information, please call the LSPS office at 225/925-5800 or email [lsps@lsps.net](mailto:lsps@lsps.net).

*Thanks!*



SURVEYING · ENGINEERING · ENVIRONMENTAL SERVICES · GIS



[www.mphinc.com](http://www.mphinc.com)  
OFFICE LOCATIONS

HOUMA, LA  
985-879-2731

HOUSTON, TX  
713-219-1470

SAN ANTONIO, TX  
210-366-8799

MIDLAND, TX  
432-276-3300



# WE APPRECIATE OUR SUSTAINING MEMBER FIRMS

## ALEXANDER & SANDERS INSURANCE

4610 Bluebonnet Blvd, Ste. A.  
Baton Rouge, LA 70809  
(225) 295-2995

## BRIS ENGINEERING, LLC

8585 Archives Ave.  
Baton Rouge, LA 70809  
225-932-6000

## JV BURKES & ASSOCIATES INC.

1805 Shortcut Hwy.  
Slidell, LA 70458  
(985) 649-0075

## CHUSTZ SURVEYING INC.

211 Richy St.  
New Roads, LA 70760  
(225) 638-5949

## COYLE ENGINEERING COMPANY, INC.

PO Box 6177  
Bossier City, LA 71171  
(318) 746-8987

## DADING MARQUES & ASSOCIATES LLC

PO Box 790  
Metairie, LA 70004  
(504) 834-0200

## DENMON ENGINEERING CO., INC.

PO Box 8460  
Monroe, LA 71211  
(318) 388-1422

## DUFRENE SURVEYING & ENGINEERING

PO Box 753  
Harvey, LA 70059  
(504) 368-6390

## EGR SERVICES, LLC

1330 Park Dr, Ste 300  
Mandeville, LA 70471  
(985) 626-7044

## G360, LLC

9502 Main Street  
Zachary, LA 70791  
(225) 570-8268

## GEOSHACK

2307 Springlake Rd., 514  
Dallas, TX 75234  
(318) 547-3973

## GILBERT KELLY & COUTURIE, INC.

2121 N. Causeway Blvd, Ste. 121  
Metairie, LA 70001  
(504) 836-2121

## GULF COAST AERIAL MAPPING

4242 Harding Blvd.  
Baton Rouge, LA 70807  
(225) 355-9722

## HAAG & TRAMMELL INC.

200 Ridgelake Dr.  
Metairie, LA 70001  
(504) 834-8392

## MORRIS P. HEBERT, INC.

PO Box 3106  
Houma, LA 70361  
(985) 879-2731

## SE HUEY COMPANY

1111 No. 19th St.  
Monroe, LA 71201  
(318) 325-1791

## HYDRO CONSULTANTS INC.

10275 Siegen Lane  
Baton Rouge, LA 70810  
(225) 766-4422

## LANDSOURCE INC.

6730 Exchequer Dr.  
Baton Rouge, LA 70809  
(225) 752-0995

## LAZENBY & ASSOCIATES INC.

2000 North 7th St.  
West Monroe, LA 71291  
(318) 387-2710

## MADER ENGINEERING INC.

1245 South College Road, Bldg. 1  
Lafayette, LA 70503  
(337) 989-8047

## M.P. MAYEUX SURVEYING & BOUNDARY CONSULTING, LLC

PO Box 61501  
Lafayette, LA 70596  
(337) 266-9500

## MEYER, MEYER, LACROIX & HIXSON, INC.

PO Box 5444,  
Alexandria, LA 71307  
(318) 448-0888

## MORRISON SURVEYING, INC.

480 N. Cities Service Hwy.  
Sulphur, LA 70663  
(337) 625-1050

## NAVIGATION ELECTRONICS INC.

200 Toledo Dr.  
Lafayette, LA 70506  
(337) 237-1413

## NTB ASSOCIATES, INC.

8643 Main St.  
Zachary, LA 70791  
(225) 751-4002

## SJB GROUP LLC

PO Box 1751  
Baton Rouge, LA 70821  
(225) 769-3400

## T. BAKER SMITH LLC

PO Box 2266  
Houma, LA 70361-2266  
(985) 868-1050

## THAT CAD GIRL

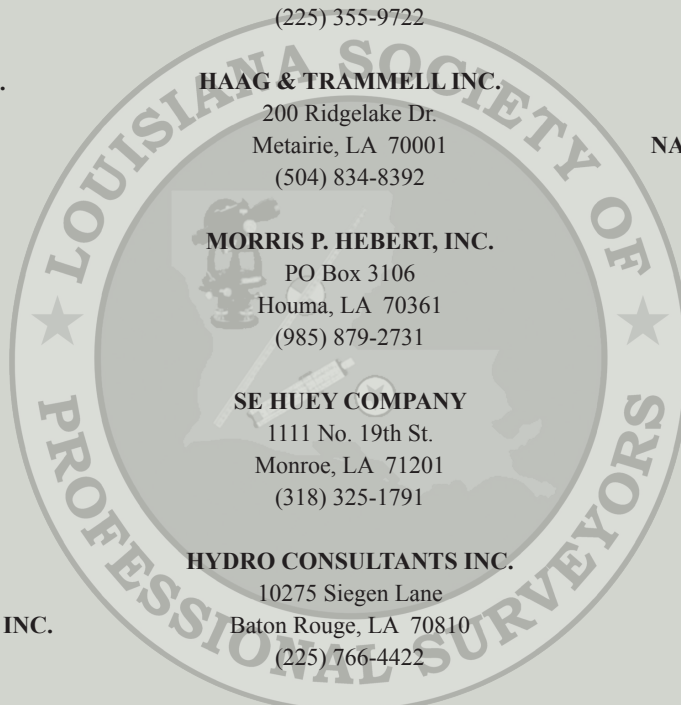
624 Holly Springs Rd., Ste 414  
Holly Springs, NC 27540  
(919) 417-8351

## CL JACK STELLY & ASSOCIATES, INC.

PO Box 53353  
Lafayette, LA 70505  
(337) 237-0746

## T2 UTILITY ENGINEERS, INC

10212 Patriot Dr  
Baton Rouge, LA 70816  
(225) 752-8322



Louisiana Society of Professional Surveyors  
9643 Brookline, Ste. 108  
Baton Rouge, LA 70809-1488

PRSRT STD  
U.S. POSTAGE  
**PAID**  
EMP



## Map & Survey with Ease & Accuracy



Stephen Herpin  
S. Louisiana Survey Sales  
Stephen\_Herpin@neigps.com  
337-706-2474

CALL US TOLL FREE  
**800.949.1446**  
VISIT OUR SITE  
**neigps.com**

Chris Cothron  
N. Louisiana Survey Sales  
Chris\_Cothon@neigps.com  
337-349-9605

Equipment Sales | Accessories | Field Supplies | Rentals | Service Support  
Training | Used Equipment | Custom Cases & Cables | Software Solutions