

**NEW BOARD
PRESIDENT
2020-2021**



Don "Ricky" Wood, II

L'ARPELTEUR LOUISIANE

MAY 2021

VOL. 60 NO. 2

9643 Brookline, Ste. 108
 Baton Rouge, LA 70809-1488
 Office: 225/925-5800
 Fax: 225/925-5802
lsps@lsps.net • www.lsps.net

INSIDE THIS ISSUE:

Message from the President..... 3
 Don "Ricky" Wood, II

60th Annual LSPS Convention.. 4-5

CORS ARP Height to RMs..... 6

Nicholls Geomatics Program Update 7

Legislative Update..... 8

SLCC Update..... 8

District Information 9

Benefits of Joining LSPS..... 10

Membership Application 11

NSRS 12

In Memoriam..... 13

Sustaining Members..... 15

Special Thanks to our Contributing Writers.

Articles submitted will be considered for publication and should be emailed to: lsps@lsps.net. Please contact the office with any questions.

The officers and board of LSPS and editors of this publication do not necessarily endorse opinions expressed by individual writers included herein.



The *L'Arpeleur Louisiane* is published quarterly as a service to the members of the Louisiana Society of Professional Surveyors. As stated in the LSPS Articles of Incorporation, the LSPS is "organized for the following purposes and to carry out the same:

Enhancing the status of the Land Surveying Profession by:

- 1) Maintaining high technical and cultural standards for entrance to the Society.
- 2) Cooperating with educational institutions in the maintenance of high standards of education in Land Surveying.
- 3) Requiring a high standard of ethical practice by members of the Society.
- 4) Aiding in the adoption of high standard of attainment for the granting of the legal right to practice Professional Land Surveying.
- 5) Fostering among students of Land Surveying the study of philosophy and history, tradition and achievement, duties and social functions of the Land Surveying Profession.
- 6) Encouraging the personal and professional development of young Land Surveyors.
- 7) Supporting activities looking to the increased employment of Land Surveyors and seeking new opportunities for service in Land Surveying."

LSPS ADVERTISING RATES:

SIZE	COST PER ISSUE	PER YEAR
FULL PAGE INSIDE	\$700.00	\$2200.00
FULL PAGE BACK COVER	\$800.00	\$2800.00
½ PAGE	\$400.00	\$1400.00
¼ PAGE	\$200.00	\$600.00

All ads are prepaid. Ad and payment should be sent to LSPS by the 15th of the month prior to publishing. Issues are published in August, November, February and May. Please mail to address listed above.

*Prices apply to camera-ready copy.
 A charge will be added for creation of an ad or art work.*



PRESIDENTIAL PRIVILEGE



Don "Ricky" Wood, II
LSPS President

Dear LSPS Members,

Well, here we are, over a year since the outbreak of the COVID 19 pandemic. All of our normal activities and ways of conducting our business have changed to meet the safety guidelines issued by our state's leaders. By the most recent indications, evidenced by the "in-person" attendance at the LSPS Convention last month, we have all shown our ability and willingness to do all that it takes to continue the work of our Land Surveying Profession. My hope is that we all continue in the same professional manner, as our country makes advancements to continue opening, in a safe manner, more business and personal opportunities.

I would like to thank the membership for electing and allowing me the honor and privilege to serve as president of such an awesome professional society. I am surely looking forward to continuing working with the board and its members to continue the advancement of our Land Surveying profession. I would like to thank Brad Holleman, for his service this past year, as LSPS had to make many adjustments, in a prompt time frame, to continue serving our membership. A special "Thank You" to Mrs. Liz Kearney, LSPS Executive Administrator, for facilitating a multitude of "behind the scene" tasks, last year, which allowed for the first LSPS On-Line Convention to continue providing for our PDH courses.

Planning for our 2022 convention is already underway for the Lafayette area. LSPS strives to offer a variety of topics and speakers. Please contact your district chairman or myself with any thoughts or suggestions for the 2022 convention.

LSPS continues monitoring legislative action through Harper, Duncan & Associates, our legislative consultant. There are a number of bills being monitored and how they may affect our Land Surveyors. We will keep you updated by email should there be any changes.

Again, I am looking forward to serving as LSPS President for this next year. Should anyone have any questions or comments, feel free to contact me directly at ricky@polarisservices.net.

Thank you for this honor and privilege. Be careful and work safely.

Sincerely,
Don "Ricky" Wood, II

Louisiana Society of Professional Surveyors



60TH ANNUAL LSPS CONVENTION

**Hosted by District 4
Convention Chairman**

Jason L. Westerman, PLS

The 2021 annual LSPS convention was held at Margaritaville Resort Casino in Bossier City, Louisiana. This year's convention was a challenging effort due to the COVID restrictions that were in place at the time of planning. These restrictions limited attendance to 75 people, so the decision was made to limit the in-person attendees to resident registered members only. Even with the limited number, the convention was a success, and everyone had a wonderful time at Margaritaville. Total numbers of in-person attendees were 81, which included board and committee members. As of now, 123 have signed up for the online classes.

I would like to thank all the Convention Committee Members for all the help in preparing for this event. With a very big thank you to, Mrs. Liz Kearney, LSPS Executive Administrator for all her help this year. There was a lot of back and forth and last-minute changes that we had to address, and she did a fantastic job. I would also like to extend a special thank you to Mr. Randy Noble for his help with the golf tournament.

The convention got started on Wednesday night with a presentation on ethics, given by Mr. Jeff Pike, PE. The night concluded with an exhibitor reception

sponsored by Navigation Electronics, Inc. NEI was one of two exhibitors invited to this year's convention. I would like to thank them and Mr. Donald Biggs with G360 for their support during this convention.

Thursday kicked off with a breakfast in the world showcase buffet and then a seminar on the new ALTA standards by Mr. Gary Kent. This presentation was top notch and gave a lot of good information on how the standards are updated and the effort that goes into them. After lunch, Mr. Kent continued with the Art of Retracement, another great presentation. Thursday night ended with a crawfish boil.

Friday started with breakfast, followed by Mr. Jay Caraway's presentation on boundary disputes in the courts. Mr. Caraway gave examples of cases that he had presided over while an appellate court judge. After Mr. Caraway, Mr. Charlie Coyle presented a 2-hour class on Louisiana Minimum Standards, which ended with a round of Jeopardy on the topics covered. I would like to thank Mr. Ryan Estes and Mr. Coyle for their hard work on the Jeopardy game. It was a great way to end the convention.



Classes in the Paradise Theater at the Margaritaville Resort and Casino.



Stan Ard receives the 2019-2020 LSPS President's Gavel from Brad Hallemen, the 2020-2021 LSPS President.



Jerry Middleton, Jr., PLS receives the 2020 Surveyor Excellence Award from Stan Ard.



60TH ANNUAL LSPS CONVENTION

Margaritaville Resort & Casino

Bossier City, La.

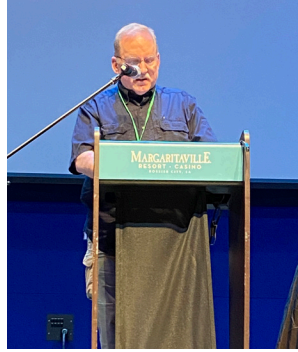
Convention Chairman, Jason L. Westerman, PLS



Jonathan Dufrene, PLS receives the 2021 Young Surveyor Excellence Award from Brad Holleman.



James Chustz, Jr., PLS receives the 2021 Surveyor Excellence Award from Brad Holleman.



2021-2022 LSPS President Ricky Wood addresses the membership for the first time.



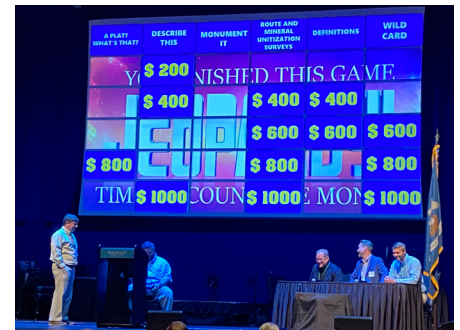
Brad Holleman receives the 2020-2021 LSPS President's Gavel from Ricky Wood, the incoming 2021-2022 LSPS President.



Dr. Brigett Scott receives the 2020 Educator of the Year Award from Dr. Esra Tekdal Yimaz at Nicholls.



Jason Westerman and Charlie Coyle used a fun way to review Louisiana Standards!



Morris P. Hebert, PLS was presented the 2020 LSPS Life Member Award at a ceremony which took place at their corporate office in Houma, La.



CORS ARP HEIGHT TO RMs

By: Jon T. Cliburn

I work as a geodetic survey technician with the LSU Center for Geoinformatics (C4G). The LSU C4G has an ongoing absolute gravity measurement campaign throughout the state of Louisiana that supports the effort by NGS to publish new datums for 2022. It is imperative to have 3-D positions, especially good heights for the gravity measurements performed on several absolute and reference monuments nearby. The FG5-X absolute gravity meter produces observations of very fine precision in the unit of acceleration called microGal ($1 \mu\text{Gal} = 0.0000001 \text{ m/s}^2$), so it is important to be as precise as we can with all of our other related data, especially height. We rely on 3-D positions based on the C4G network of CORS antennae, further refined by measurements taken with a Leica TDRA6000 theodolite/total station and Trimble DiNi digital level.

Almost all of the sites where we measure absolute gravity are collocated with an associated Continuously Operating Reference Station (CORS) antenna on the roof, which provides a high-confidence height value at the Antenna Reference Point (ARP). The ARP is important because NGS uses CORS as the control for the National Spatial Reference System (NSRS). This is the height value that we want to refer to our reference marks (RM1, RM2) on the ground and, ultimately, our absolute mark (AA) in the interior of the building.

The immediate benefit to local surveyors is that we have achieved a precision of about one millimeter transferring the height from the ARP to the RM. Doing so with GNSS would be limited by GNSS vertical precision ($\pm 20 \text{ mm}$ typical) and the precision of the required geoid model of several centimeters. Someone who needs very precise ties to the NSRS can run precise levels from the accessible RM on the ground.

First, we replace the antenna with a Leica round prism assembly on the antenna mount that is coincident with the ARP. This gives us a known target height above the ARP of 0.11 meters. We also place a Leica target sticker on the antenna mast to serve as a reference for future site visits, thus eliminating any risk associated with accessing the roof or potentially disturbing the antenna. Two more prisms are set up on tripods above both RM1 and RM2 (and others if present) and their target heights measured. A Leica TDRA6000 total station is then set up on the ground over a known point (determined by RTN positioning) that is intervisible with both the prism and target sticker on the antenna mast and the prisms set up above the reference marks. Then, using the ARP as a backsight, and the target sticker, the RMs as foresight, we perform a 6-set, both faces observation with the total station. This assigns horizontal coordinates and height to all the marks, all referenced from the ARP to our

reference marks on the ground. For future site visits, the target sticker can be used as the backsight because the difference between the ARP and the sticker is known and is a constant difference. Any changes in the ARP height are tracked by our CORS network. The total station measurements continue in a traverse that includes the AA mark inside the building.

Additionally, to further refine the height differentials, we use a Trimble DiNi digital level. Starting with the height assigned to RM2 by the total station (or adjusting it retroactively in the office) we perform a double-run to the AA mark and back to our starting point of RM2, hitting RM1 each way. We begin by performing a collimation check to adjust for instrument error. Once the correction is applied, we set up a level rod on RM2 and another on RM1 or, if a shot between the two reference marks is not possible, on a turning plate. We set up the digital level equidistant between the two rods. By balancing our shots in this way, we further compensate for potential instrument error. We record RM2 as a backsight and RM1 as a foresight, resulting in a new, even more, precise height differential between the two points. This continues in a leapfrog fashion (the first level rod is moved to the next point and becomes the new foresight, the second level rod is now the new backsight) to the AA mark and back, ending with RM2 being recorded as a foresight. Routinely closing within 1 mm, the level run gives an extremely precise difference in height between our reference marks and any other points of interest on the ground.

Transferring the CORS ARP height to our reference marks enables local surveyors to tie into the NSRS via any of these accessible marks measured by LSU C4G. The precision and redundancy of these techniques provide us with confidence in the heights we use as input parameters when measuring absolute gravity on the AA mark or relative gravity between all marks. This, in turn, allows us to be more confident in the gravity data we obtain in our support of NGS in their effort to publish new datums for 2022 and improve the geoid model for Louisiana.

The LSU Center for Geoinformatics is the home of the Louisiana Spatial Reference Center; creator and host of Louisiana's NGS CORS network. LSU created C4G to focus on research and services in Geodesy and Geoinformatics; as a result, C4G has established Louisiana's only Statewide GPS/GNSS Real-Time Network, C4GNet, which is entirely by subscribers to the RTN. (<http://c4g.lsu.edu/n>)

Jon T. Cliburn is a Research Associate doing geodetic research for the Center for Geoinformatics at LSU. He joined C4G in 2017. He received a B.S. in Geography with a GIS minor from LSU in 2015.



NICHOLLS GEOMATICS PROGRAM UPDATE

Dr. Esra Tekdal-Yilmaz

Greetings from the Geomatics Program at Nicholls State University,

As we approach the end of semester we have some good news, Nicholls Geomatics Students, Breanna Arthur and Ashish Pandey, won second place in the

NSPS competition among the baccalaureate degree programs. We are looking forward to our advisory board meeting on May 20th, 2021 at Nicholls State Campus and will have Zoom access available for board members who cannot attend our meeting in person.

ENHANCE YOUR CAREER OPPORTUNITIES

BECOME A CERTIFIED SURVEY TECHNICIAN (CST)

This four-level certification program indicates official recognition by NSPS that a person can perform surveying tasks at a specific technical level. Certification provides employers with a method of determining job assignments and advancement since certification is an indication of one's ability to perform specific job tasks. Increase Your Skills. Enhance Your Career Opportunities. Set a Straight Course to Your Future. Become a Certified Survey Technician (CST)!

NSPS CST
CERTIFIED SURVEY TECHNICIAN

learn more at nsp.us.com
+1 (240) 439-4615 Ext. 112

Training now available @ www.learnscst.com

Reducing Utility Risk

At T2, we help lower construction costs, minimize risk, and avoid costly utility damage.

We have decades of experience, top notch equipment, and processes to identify, mitigate, manage risks, keeping your projects moving forward.

- Subsurface Utility Engineering
- Utility Coordination
- Surveying Services
- Terrestrial & Mobile LiDAR
- Construction Management

For more information:
Suzanne McCain | 225 900 8683
info@T2ue.com
www.T2ue.com

T2 utility engineers

Thank You!

FOR RENEWING YOUR LSPS MEMBERSHIP!!



LEGISLATIVE UPDATE

By: Harper Duncan & Associates, LLC

The Legislative Session is halfway over. The majority of bills we are monitoring are moving smoothly through the legislature. Below is an update on the bills with a brief description.

Bills that passed out of their first committee:

HB 331 by Rep. Bourriaque – Allows the state to enter into agreements with landowners concerning boundaries on dual claimed water bottoms.

HB 399 by Rep. Carrier – Allows state and private landowners to enter into boundary agreements on disputed property.

HB 606 by Rep. Bass – Changes the design-builders contracts qualification process to allow for a pool of pre-qualified design-builders and experience specific to the type of work.

Bills that passed out of their first chamber:

HB 69 by Rep. McKnight – relative to underground utilities. No votes against.

HB 174 by Rep. Huval – grants the Louisiana Municipal Natural Gas Purchasing and Distribution Authority or participating subdivision the power to require contractors and subcontractors to be prequalified as part of the public bid process for projects including a pipeline facility. No votes against.

HB 323 by Rep. Gadberry – changes the applicability from design professional services to architectural and engineering professional services. Was amended to also

include land surveyors. No votes against.

HB 491 by Rep. Gadberry – Allows a member of a municipal or parish governing authority, an appointed member of a planning or zoning or appeals board or commission of a parish or municipality and related persons and legal entities to make application for the approval of the subdivision or resubdivision of property and for the zoning of such property or for a building permit and any inspections performed pursuant thereto under specified circumstances. No votes against. No votes against.

SB 111 by Senator Womack – Required public entities to promptly pay all obligations arising under a public contract when they are due. This includes payment of approved change orders. Requires that any change by a bidder to a bid prior to its submission be scratched through and initialed by the bidder. Change orders are to be processed and issued by the public entity no later than 40 days following final execution of the change order. No votes against.

SB 169 by Senator Allain – Updates the Louisiana Underground Utilities and Facilities Damage Prevention Law. The language was proposed by the DigLA Advisory Committee. No votes against.

SB 182 by Senator White – repeals provision regarding access to bidding documents for public bidding. No votes against.

SB 207 by Senator White – relative the subpoena of DOTD contractors. No votes against.



SOUTH LOUISIANA COMMUNITY COLLEGE UPDATE

By: Michael O’Pry

We have just started final exams and have six graduating in a few days.

We are still operating hybrid, so we do a combination of remote learning, and in person. We will operate the same way in the fall, this allows those in the workforce to do their work remotely, and not miss anything that goes on in class.

Our students now can continue to Idaho State University to a four-year degree in Geomatics and Surveying. All of our credits transfer over, it is a real 2+2 transfer, they complete online at ISU. We supply all 30 credit hours for LAPELS, ISU provides the 4-year component as well as more prep in surveying and geomatics. This is a great option for those working while going to school.



LSPS DISTRICT INFORMATION

WHY ATTEND A DISTRICT MEETING?

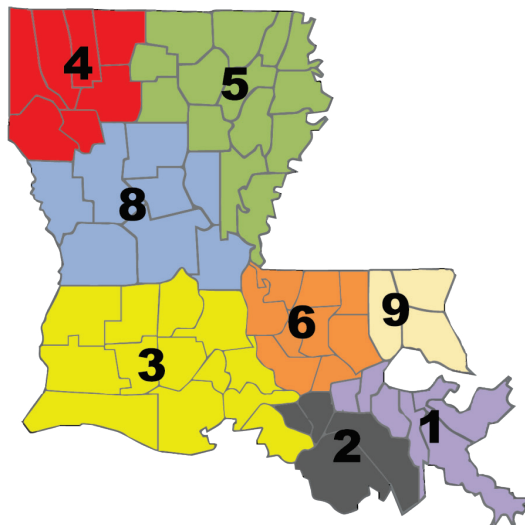
District	Contact info
District 1	John Teegarden jteegarden@ascellc.com
District 2	Andrew Szush andrew.szush@tbsmith.com
District 3	Shawn MacMenamin smacmenamin22@gmail.com
District 4	Jason Westerman redchuteland@gmail.com
District 5	Jon Braswell jbraswell@sehuey.com
District 6	Jean Reulet jean.reulet@sjbgroup.com
District 8	W. Aaron Wood aaron.wood@woodsurveying.com
District 9	Dennis Gowin dgowin@ddgpc.com

Networking – Who knows more about opportunities in surveying, than those active in it?

Educational Benefits - Want to stay of top of our profession? Most meetings offer opportunity for upgrading your experience through top speakers in our field.

Leadership Opportunities – It is not enough to just join a district. Take advantage of opportunities to get involved in committee work, serve some time as an officer, and help coordinate events. The more active you are, the more visible you become to other members. Leadership roles reflect well on you, and on the company that employs you. It proves they hired a winner!

If you are not an LSPS member, we would like to invite you to attend a District meeting in your area. Contact the LSPS office at lsps@lsps.net , or the chairman in your area for details about upcoming meetings.



LSPS Districts

We would like to invite you to attend a District meeting in your area. Contact the LSPS office at lsps@bellsouth.net or the chairman in your area for details about upcoming meetings.



BENEFITS OF JOINING LSPS

The Louisiana Society of Professional Surveyors is organized to enhance the Surveying Profession. Our goal is to carry out our mission by maintaining high technical and cultural standards in our field, working with educational institutions for the maintenance of high standards of education in Land Surveying, requiring a high standard of ethical practice by our members, and encouraging the personal and professional development of young Land Surveyors.

BENEFITS OF MEMBERSHIP IN OUR SOCIETY INCLUDE:

- **NETWORKING** – Who knows more about opportunities within a field than those actually involved in it? No one. The roster of our society is a gold mine to get your network rolling.
- **EDUCATIONAL BENEFITS** – Want to stay at top of your profession, learn new techniques and strategies? There are endless opportunities for upgrading your experience through seminars, listening to top speakers in your field, workshops, and just plain old-fashioned sharing of information among your peers.
- **LEADERSHIP OPPORTUNITIES** – It isn't enough to just join a District of the society. Take advantage of the many opportunities to get involved in committee work, serve some time as an officer, or help coordinate events. The more active you are, the more visible you become to the other members. This can only be a plus in your career future.
- **RESUME UPGRADING** – As our profession becomes more complex and difficult to master, the need for continued certification becomes more prevalent.
- **SOCIAL BENEFITS** – Don't overlook the fun factor. Groups of people with common interests are always sources of new friends. You speak the same language, laugh at the same jokes and dream similar dreams. Becoming active opens up many possibilities!

The new age of advanced technology has created the need for land surveyors to guard their profession. Our society works with the Louisiana Professional Engineering & Land Surveying Board (LAPELS) in the process of establishing the current continuing professional development requirements.

We have been involved with many surveying issues...

- ◆ our society began in 1961 and currently has over **525 members**
- ◆ we are approved by the LAPELS Board as a **seminar sponsor**
- ◆ LSPS is an affiliate of the American Congress on Surveying and Mapping, and the **National Society of Professional Surveyors**
- ◆ we have a standing Legislative Committee to **review legislation** that may affect the surveying profession
- ◆ the LSPS Liaison Committee communicates with the **LAPELS Board** on issues that affect land surveyors
- ◆ we host an Annual Convention - with exhibitors displaying the latest in surveying equipment, and LSPS offering Personal Development Hours to meet licensing requirements
- ◆ the LSPS Executive Board continually working to upgrade member benefits.



Louisiana Society of Professional Surveyors

Affiliate of the National Society of Professional Surveyors
9643 Brookline Avenue, Suite 108, Baton Rouge, LA 70809 • Phone (225)925-5800 • Fax (225)925-5802
lsps@lsps.net • www.lsps.net

PLEASE COMPLETE THE FOLLOWING SPACES:

Registration Number: _____

Name: _____
LAST FIRST MIDDLE

P.L.S. P.E. Other _____

Home Address: _____
STREET CITY & STATE ZIP CODE

Home Phone: _____

Business Affiliation: _____

Position or Title: _____

Business Address: _____
STREET CITY & STATE ZIP CODE

Business Phone: _____

Fax Phone: _____

E-MAIL: _____ UPON MEMBERSHIP ACCEPTANCE, NAME, EMAIL, WORK AND/OR HOME PHONE NUMBER CAN BE ADDED TO THE WEBSITE DISTRICT CONTACT PAGE. _____ YES(CIRCLE CHOICE) _____ NO

Education: _____
SCHOOL DATE GRADUATED DEGREE

Surveying Experience _____
YEARS

LSPS Member SPONSOR:

Name: _____ Address: _____

Telephone: _____ Signature _____

I hereby apply for admission into the Louisiana Society of Professional Surveyors as a _____ Member, and agree to comply with the Charter, By-Laws and the Code of Ethics of the Association. Please assign me to the following district:

- District 1 – New Orleans
- District 2 – Houma
- District 3 – Lafayette
- District 4 – Shreveport
- District 5 – Monroe
- District 6 – Baton Rouge
- District 7 – Lake Charles
- District 8 – Alexandria
- District 9 – Covington
- Out of State

Date: _____

APPLICANT'S SIGNATURE _____

CLASSES OF MEMBERSHIP

RESIDENT REGISTERED MEMBER

Any person whose legal residence is the State of Louisiana and holding a license from the State of Louisiana authorizing such person to engage in the practice of Land Surveying. Resident Registered Members shall be entitled to vote on all matters and hold any Office in the Corporation.

INITIATION FEE \$10.00 ANNUAL DUES \$180.00
INCLUDES NSPS MEMBERSHIP

NON-RESIDENT REGISTERED MEMBER

Surveyors registered in the State of Louisiana but not a resident of Louisiana. Non-Resident Members shall be entitled to vote but shall not be eligible to hold any Office in the Corporation.

INITIATION FEE \$10.00 ANNUAL DUES \$140.00

STUDENT MEMBER

Any full-time undergraduate student of a college or vocational school recognized by the Board. Student Members shall not be eligible to vote or hold any Office in the Corporation.

ANNUAL DUES \$20.00

ASSOCIATE MEMBER

Any person working toward licensure, land survey intern, or surveyor not registered in Louisiana, recognized and so admitted by the Board of Directors. Associate members shall not be eligible to vote or hold any Office in the Corporation.

INITIATION FEE \$10.00 ANNUAL DUES \$55.00

AFFILIATE MEMBER

Any person not included within the definitions above provided in paragraphs 1, 2, 3 and 4 interested in advancing the cause and aims of the Corporation. Affiliate Members shall not be eligible to vote or hold any Office in the Corporation.

INITIATION FEE \$10.00 ANNUAL DUES \$35.00

SUSTAINING MEMBER

Any firm or individual desiring to support the aims and objectives of the Association, who may or may not be entitled to one of the foregoing classes of Membership, may become a Sustaining Member upon application and approval by a majority vote of the Board of Directors. Sustaining Members shall not be eligible to vote or hold any Office in the Corporation, however, if a Sustaining Member also holds another class or other classes of membership that Sustaining Member class shall not infringe upon such rights and privileges.

ANNUAL DUES \$300.00

Credit card# _____

Expiration Date: _____

Please return completed form with Initiation Fee and Annual Dues to LSPS at the address above.

Rev.04/20



Issue 24 April 2021

NSRS Modernization News

For all issues of **NSRS Modernization News**, visit:
geodesy.noaa.gov/datums/newdatums/TrackOurProgress.shtml

Updates to Blueprint Documents

[Blueprint for the modernized NSRS, Part 2: Geopotential Datum and Geopotential Coordinates](#) and [Blueprint for the modernized NSRS, Part 3: Working in the Modernized NSRS](#) were both updated and released this last quarter. The update to Blueprint Part 1 is being finalized and will be released soon. A pair of webinars, discussing both [Blueprint Part 3](#) and the [Use Cases](#) found in Blueprint Part 3 occurred in March and April. Recordings of these webinars can be found by clicking the links above.

Geospatial Summit

NGS will host a completely virtual 2021 Geospatial Summit on May 4–5, 2021. The event is open to the public, and registration is free. [Registration](#) information is available online.

Industry Workshop

On May 6, NGS will host a small invitation-only workshop to continue coordination between commercial equipment/software representatives and NGS regarding NSRS Modernization. More information will be posted after the event, or you can contact NGS.Infocenter@noaa.gov.

Correction

Last month's newsletter incorrectly stated a GRAV-D collection goal of 84.0% at the end of 2020. The correct goal for that time was 82.5%

Progress in Ongoing Projects

There are currently **27 ongoing projects** directly related to NSRS modernization around NGS. Here are highlights from two:

SPCS2022 (Project Manager: Dr. Michael Dennis)

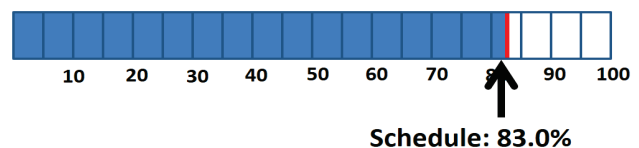
March 31, 2021, was the deadline for state stakeholder groups to provide their designs for SPCS2022 zones, based on previously submitted proposals (due one year prior). NGS received designs from 28 states for more than 800 low-distortion projection zones. The actual final number of zones will be determined later this year, after the designs are reviewed by NGS.

OPUS Projects 5.0/GPS Campaign for Transformations (Project Managers: Dr. Daniel Gillins/ Galen Scott)

OPUS Projects 4.0, which supports submission of data to the NGS IDB will soon move from the NGS Beta website to the [main NGS website](#). Coming soon to the [Beta website](#) is **OPUS Projects 5.0**, which will support the uploading and processing of pre-computed GNSS vectors (from RTK/RTN surveys, historic vectors, or vectors processed using non-OPUS software). This enhanced capability will allow for more data to be submitted to the GPS campaign for Transformations. See this [webinar](#) for more info.

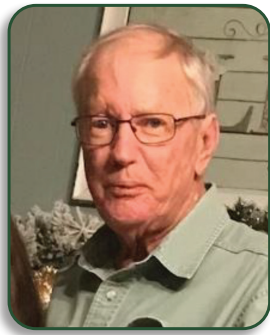
GRAV-D progress last quarter: **up 1.3% to 85.3%**
AHEAD OF (new) Schedule!

Recently: Hawaii, Nevada





In Memoriam...



John D. Laughlin

January 19, 1946 – April 26, 2021

IOTA – It is with heavy hearts that the family of John D. Laughlin announced his passing on Monday, April 26, 2021 at the Ochsner LSU Health Medical Center in Shreveport at the age of 75. A Mass of Christian Burial was celebrated at 11:00 am on Thursday, April 29, 2021 at

St. Joseph Catholic Church in Iota. Entombment followed in the St. Joseph Mausoleum with Father Jude Thierry, Celebrant.

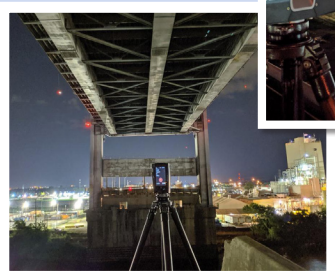
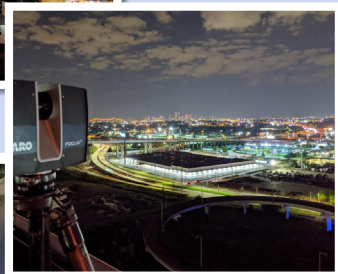
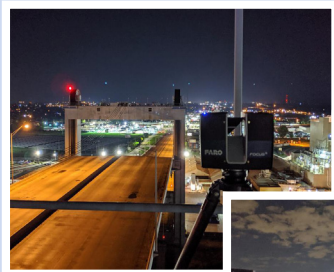
John enjoyed watching football, and being with his friends and family, but most of all he dearly loved spending time with his great grandchildren. His passion and career was being a land surveyor. John was a loving and devoted husband, father, grandfather and friend and will be dearly missed by all, including his wife of fifty two years, Shirley M. Laughlin of Natchitoches; daughter, Carla Kay Laughlin DeBord and husband, William of Natchitoches; brothers,

Francis Laughlin and friend, Kat Manuel, and Michael Laughlin and wife, Debbie, all of Eunice; sisters, Marie Davis of Baytown, TX and Cathy Richard and husband, Russell of Eunice; grandson, Donovan Saucier and friend, Kayla Stanley of Natchitoches; four great grandchildren, Alexia, Logan, Laynie, and Dillon Saucier; and extended family and friends.

He is preceded in death by his parents, Clarence and Helen Fontenot Laughlin; brother, Phillip Laughlin; and sister, Shelia Laughlin.

At the request of the family, visitation was held at Ardoin's Funeral Home in Iota on Wednesday, April 28th from 3:00 pm until 9:00 pm and again on Thursday, April 29th from 8am until time of services. A Rosary was prayed at 6:00pm on Wednesday.

Family and friends may view this obituary and sign the guestbook at www.ardoinfuneralhomes.com.



WE'D LOVE TO FEATURE YOUR SURVEYING PICTURES IN OUR MAGAZINE!

**EMAIL PICTURES TO LSPS@LSPS.NET
MAYBE YOU'LL SEE YOUR PICTURES IN OUR NEXT EDITION!**

WANT TO GET INVOLVED? YOU CAN HELP

BY VOLUNTEERING TO WORK WITH ONE OF THE FOLLOWING:

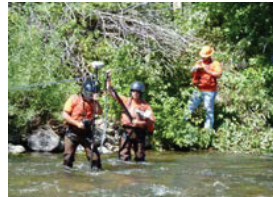
- Legislative Committee
- Education Committee
- Newsletter Committee
- Seminar & Technical Education Committee
- Scholarship Committee
- Promotion of the Profession Committee
- and others.

If you would like more information, please call the LSPS office at 225/925-5800 or email lsp@lsp.net.

Thanks!



SURVEYING · ENGINEERING · ENVIRONMENTAL SERVICES · GIS



www.mphinc.com

OFFICE LOCATIONS

HOUMA, LA
985-879-2731

HOUSTON, TX
713-219-1470

SAN ANTONIO, TX
210-366-8799

MIDLAND, TX
432-276-3300

WE APPRECIATE OUR SUSTAINING MEMBER FIRMS

ALEXANDER & SANDERS INSURANCE
4610 BLUEBONNET BLVD, STE. A.
BATON ROUGE, LA 70809
(225) 295-2995

BRIS ENGINEERING, LLC
8585 ARCHIVES AVE.
BATON ROUGE, LA 70809
225-932-6000

JV BURKES & ASSOCIATES INC.
1805 SHORTCUT HWY.
SLIDELL, LA 70458
(985) 649-0075

CHUSTZ SURVEYING INC.
211 RICHY ST.
NEW ROADS, LA 70760
(225) 638-5949

COYLE ENGINEERING COMPANY, INC.
PO BOX 6177
BOSSIER CITY, LA 71171
(318) 746-8987

DADING MARQUES & ASSOCIATES LLC
PO BOX 790
METAIRIE, LA 70004
(504) 834-0200

DENMON ENGINEERING CO., INC.
PO BOX 8460
MONROE, LA 71211
(318) 388-1422

DUFRENE SURVEYING & ENGINEERING
PO BOX 753
HARVEY, LA 70059
(504) 368-6390

EGR SERVICES, LLC
1330 PARK DR, STE 300
MANDEVILLE, LA 70471
(985) 626-7044

G360, LLC
9502 MAIN STREET
ZACHARY, LA 70791
(225) 570-8268

GEOSHACK
2307 SPRINGLAKE RD., 514
DALLAS, TX 75234
(318) 547-3973

GILBERT KELLY & COUTURIE, INC.
2121 N. CAUSEWAY BLVD, STE. 121
METAIRIE, LA 70001
(504) 836-2121

GULF COAST AERIAL MAPPING
4242 HARDING BLVD.
BATON ROUGE, LA 70807
(225) 355-9722

HAAG & TRAMMELL INC.
200 RIDGELAKE DR.
METAIRIE, LA 70001
(504) 834-8392

MORRIS P. HEBERT, INC.
PO BOX 3106
HOUMA, LA 70361
(985) 879-2731

SE HUEY COMPANY
1111 NO. 19TH ST.
MONROE, LA 71201
(318) 325-1791

HYDRO CONSULTANTS INC.
10275 SIEGEN LANE
BATON ROUGE, LA 70810
(225) 766-4422

LANDSOURCE INC.
6730 EXCHEQUER DR.
BATON ROUGE, LA 70809
(225) 752-0995

LAZENBY & ASSOCIATES INC.
2000 NORTH 7TH ST.
WEST MONROE, LA 71291
(318) 387-2710

MADER ENGINEERING INC.
1245 SOUTH COLLEGE ROAD, BLDG. 1
LAFAYETTE, LA 70503
(337) 989-8047

M.P. MAYEUX SURVEYING &
BOUNDARY CONSULTING, LLC
PO BOX 61501
LAFAYETTE, LA 70596
(337) 266-9500

MEYER, MEYER, LACROIX & HIXSON,
INC.
PO BOX 5444,
ALEXANDRIA, LA 71307
(318) 448-0888

MORRISON SURVEYING, INC.
480 N. CITIES SERVICE HWY.
SULPHUR, LA 70663
(337) 625-1050

NAVIGATION ELECTRONICS INC.
200 TOLEDO DR.
LAFAYETTE, LA 70506
(337) 237-1413

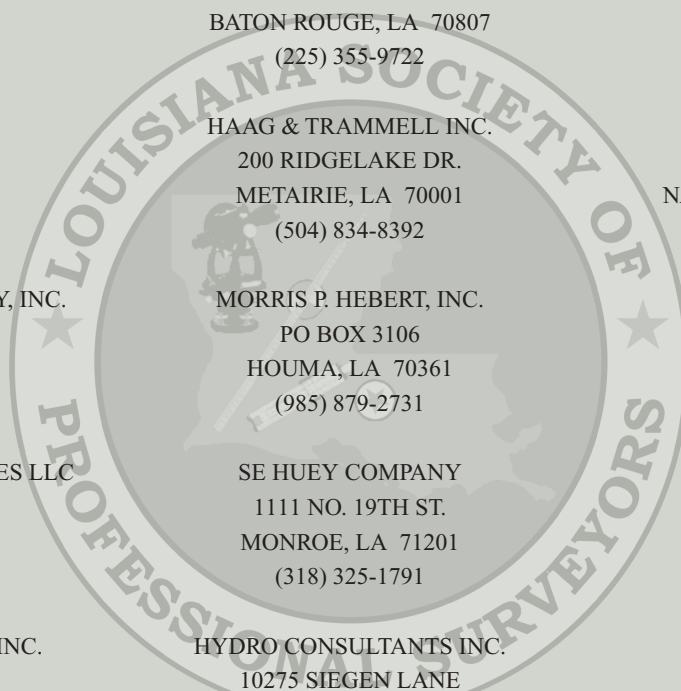
NTB ASSOCIATES, INC.
8643 MAIN ST.
ZACHARY, LA 70791
(225) 751-4002

SJB GROUP LLC
PO BOX 1751
BATON ROUGE, LA 70821
(225) 769-3400

T. BAKER SMITH LLC
PO BOX 2266
HOUMA, LA 70361-2266
(985) 868-1050

CL JACK STELLY & ASSOCIATES, INC.
PO BOX 53353
LAFAYETTE, LA 70505
(337) 237-0746

T2 UTILITY ENGINEERS, INC
10212 PATRIOT DR
BATON ROUGE, LA 70816
(225) 752-8322



Louisiana Society of Professional Surveyors
9643 Brookline, Ste. 108
Baton Rouge, LA 70809-1488

PRSR STD
U.S. POSTAGE
PAID
EMP



We've got your back,
every step of the way

Survey Solutions to Fit Every Need

Thanks LSPS for a GREAT 2020!



Microdrones LiDAR System:

- Now only \$35,000
- Go from field to finish to surface on 30 acres in one day!

Contact us for a demo flight!



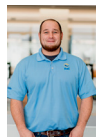
Free Trimble TSC7 with the Purchase of a new Trimble R12

Over \$9,000 off the LIST PRICE!

Only \$23,995!

Now available to rent!

Stephen Herpin
S. Louisiana Survey Sales
Stephen_Herpin@neigps.com
337-706-2474



Chris Cothron
N. Louisiana Survey Sales
Chris_Cothon@neigps.com
337-349-9605



Ross Kenney
UAS Sales & Support
Ross_Kenney@neigps.com
337-344-0430



Equipment Sales | Accessories | Field Supplies | Rentals | Service | Support
Training | Used Equipment | Custom Cases & Cables | Software Solutions

VISIT OUR SITE neigps.com CALL US TOLL FREE 800.949.1446